



◆ Ff-I01s04-AB II-KO-16(QHJI; iPS cells expressing the highest HLA in Japan※1)

Clone ID	Ff-I01s04-AB II-KO-16	Product	Human iPS cells
Source	Peripheral Blood, Human	Race	Japanese
Passage No.	33	Gender	Male
Label Name	21B80	Manufacture Dates	Feb. 14 th , 2021
Culture medium	StemFit AK03N	Substrate	iMatrix-511MG
Culture Method	Feeder-free (※2)		
Genome-editing techniques	CRISPR-Cas9 (※2)		
Use and Provision of this cell stock	Please check our web site ; https://www.cira-foundation.or.jp/e/project/index.html		

(※1) **Reference;** Okita, *et. al.*, Nat Methods. 2011 8(5): 409-412

(※2) **Reference;** Huaigeng Xu, *et al.* Targeted Disruption of HLA Genes via CRISPR-Cas9 Generates iPSCs with Enhanced Immune Compatibility. Cell Stem Cell. 2019 Apr 4;24(4):566-578.

For Research Use Only

Test Result

Test	Method	Result
Sterility	BacT/ALERT	Negative
Mycoplasma	PCR	Negative
Endotoxin	LAL	< 0.017 EU/mL
Morphology	Microscope	Consistent with human ES cells
STR genotyping	PCR	Consistent with the donor cells
Karyotype	G-banding	46,XY[20]
CNV(※3)	WGS, SNP	No de novo CNVs (>1kbp) were found in COSMIC Cancer Gene Census (ver.88) and Shibata list(※4) .
SNV/Indel(※3)	WGS	De-novo non-synonymous SNVs/Indels were found in COSMIC Cancer Gene Census (ver.88) and Shibata list(MN1) (※4).
Gene editing confirmation	Sanger Sequencing	Detected of edits
	Flow cytometry	HLA-A(-) = 99.18 % HLA-C(+) = 99.98 %
Cardiac differentiation	Reference: “ Funakoshi <i>et al.</i> , 2016, Sci Rep.”	TnT(+) = 69.88 %
Undifferentiated markers	Flow cytometry	TRA-1-60(+) : 89.5 %
Thawed postnatal cells	Counting the number of the cells (※5)	1.98 × 10 ⁵ cells (Survival rate ; 92.9 %)

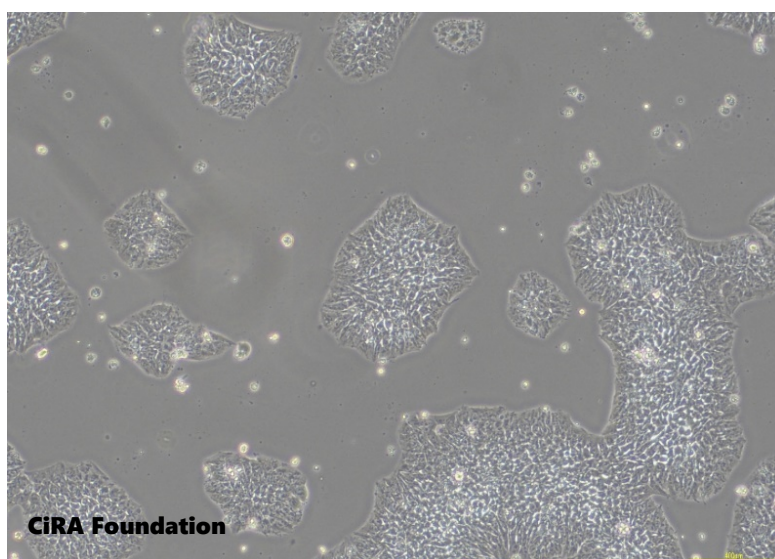
Number of proliferating cells after thawing	Counting the number of the cells after culturing for 4 days ^(※5) .	7.19 × 10 ⁵ cells (Number of seeded cells : 0.69 × 10 ⁵ cells)
--	---	--

(※3) CNV; Copy Number Variation , SNV/Indel; Single nucleotide variants /Insertion Deletion

(※4) The PMDA Science Board “Current Perspective on Evaluation of Tumorigenicity of Cellular- and Tissue-based Products Derived from induced Pluripotent Stem Cells (iPSCs) and iPSCs as Their Starting Materials” (Cellular- and Tissue-based Products Subcommittee, 20 August 2013)

(※5) NucleoCounter® NC200

■ Image



Please contact us if you have any questions.

ips-request@cira-foundation.or.jp