

◆ CFiS-S02

Clone ID	CFiS-S02	Product	Human iPS cells
Source	Peripheral Blood, Human	Race	Japanese
Passage No.	7	Gender	Male
Label Name	22AJ35	Manufacture Dates	Nov. 28 th , 2022
Culture medium	StemFit AK03N	Substrate	iMatrix-511MG
Culture Method	Feeder-free (※2)	Grade	Research grade
Reprogramming Method	Sendai Virus vector		
Use and Provision of this cell stock	Please check our web site ; https://www.cira-foundation.or.jp/e/index.html		

(※1) Reference; Nakagawa, *et. al.*, Nat Biotechnol. 2008 26(1):101-106

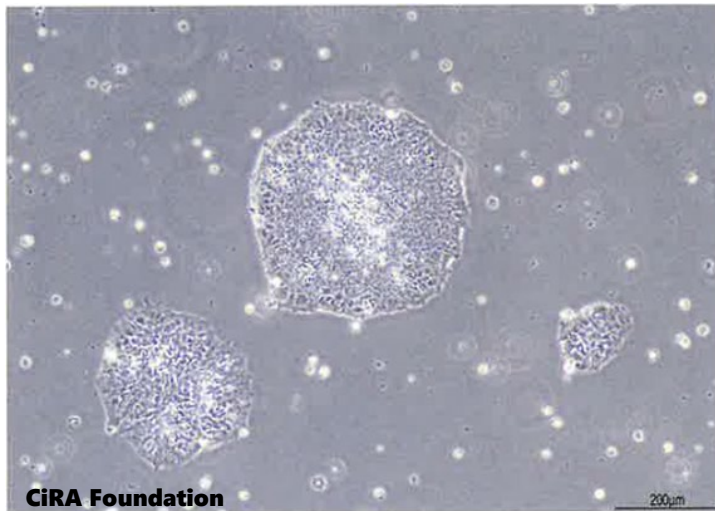
For Research Use Only

Test Result

Test	Method	Result
Sterility	BacT/ALERT	Negative
Mycoplasma	PCR	Negative
Morphology	Microscope	Consistent with human ES cells
Karyotype	G-banding	46,XY[20]
SeV remnants	qPCR	Below the limit of quantification
Undifferentiated markers	Flow cytometry	TRA-1-60(+) ; 98.0% SSEA4(+) ; 99.7% TRA-2-49(+) ; 96.8% OCT3/4(+) ; 98.2%
Thawed postnatal cells	Counting the number of the cells (※2)	3.47×10^5 cells (Survival rate ; 96.6 %)
Number of proliferating cells after thawing	Counting the number of the cells after culturing for 6 days.	7.83×10^5 cells (Number of seeded cells : 0.65×10^5 cells)
Cardiac differentiation	Flow cytometry	Troponin T(+); 73.1 %
Trilineage differentiation	Flow cytometry	Ectoderm; 97.5% Mesoderm; 92.2% Endoderm; 56.7%
Origin cells	qPCR	Non-T cells

(※2) Cell Counter model R1

■Image



Please contact us if you have any questions.

(minnano-saibou@cira-foundation.or.jp)



Reprint or reproduction of this page without permission is prohibited.